



ALEX TECH CATALOGUE

EN

Shenzhen Alex Technology Co.,Ltd / ALOVA



About Us

www.alex-technology.com

Established in 2010, SHENZHEN ALEX TECHNOLOGY CO., LTD is an innovative technology manufacturer focusing on Open-Ear audio products in Shenzhen, China.

Our goal is to provide our customers with revolutionary products that look, feel and sound incredible.

It is our mission to let more people living a healthy life with a healthy hearing way.



Office View

✓ R&D and Marketing Department

Location: Unit 407-409, Hehuan Commercial Center, Bldg 36, Yintian Gongye Rd, Xixiang, Bao'an, Shenzhen.



Factory View

✓ Manufacturing Open-Ear Headsets

Floor Space: 2,000m²

Factory Staff: 120+ workers

Productivity: 60-80k units/month

Location: Floor 5, Unit B, Bldg 1, YongQi Kejiyuan, Yintian Rd, Bao'an, Shenzhen.





Major Business



◆ Open-Ear Audio

Our original designed Open-Ear audio products cover bone conduction and directional audio headphones. Products are in stock with large quantities and we are able to ship within 3 days.

◆ OEM

Over the years, we have provided high-quality OEM services for global customers, customized product logo, labels, packaging, manual and delivery processes according to customer requirements, and carried out strict quality inspections according to customer requirements.

◆ ODM

An experienced R&D team, by combining marketing, design and technical services, we help our clients maximize brand value, expand product portfolio and provide professional & efficient services.



A New Way of Hearing

◆ Why Open-Ear Audio?

To reduce hearing problems caused by excessive volume and in-ear blockages, to avoid accidents due to “ear blindness” wearing headphones outdoors, we are committed to creating audio products that protect hearing and have situational awareness.

◆ What we have done?

With 12+ experienced electronic product engineers and a management team with more than 10 years of production management experience, we have successfully developed more than a number of Open-Ear projects for our customers.

Alex
Tech



Why We Exist

We are committed to becoming a pioneer in creating healthy listening for human beings.



Healthy



Helpful

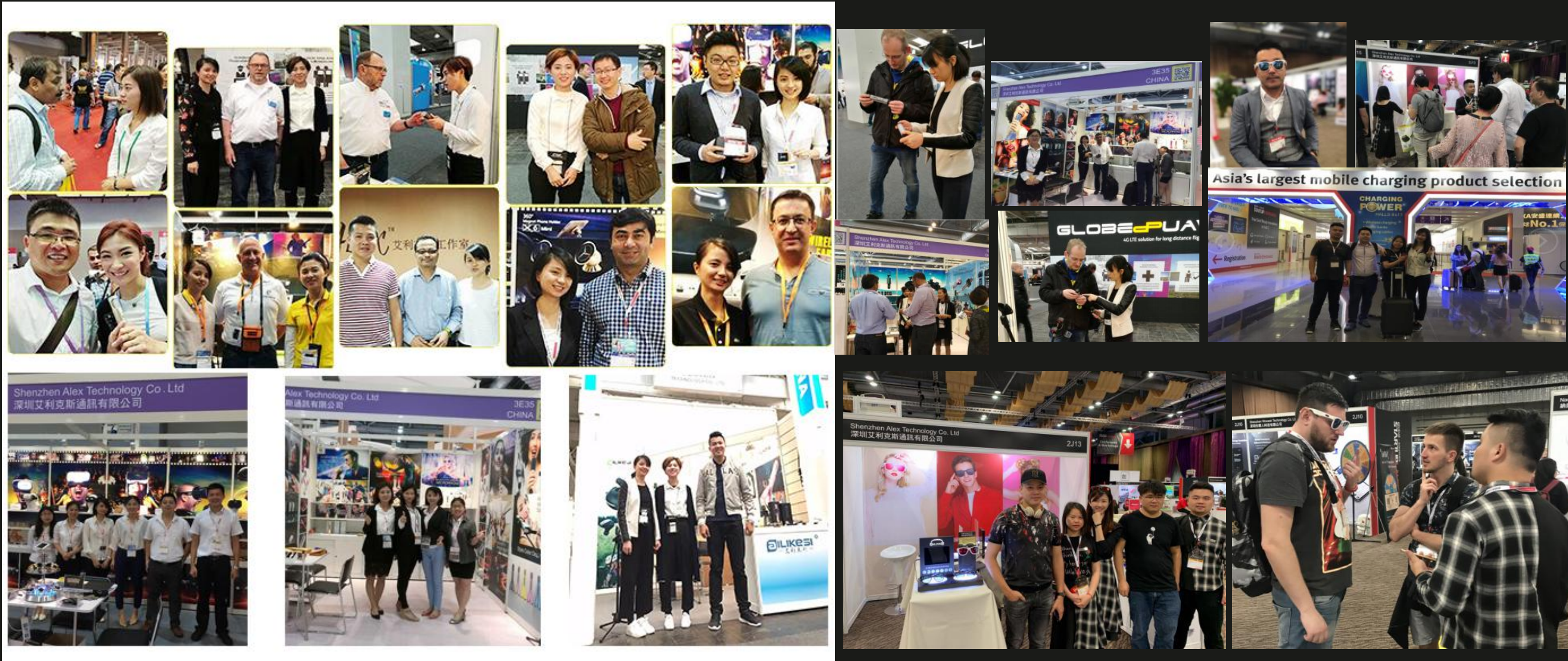


Hopeful



Exhibitions

Alex
Tech



We participate in electronic exhibitions all over the world, not only showing new products every quarter, but also visiting our old customers and collecting customers' opinions to improve our product design and service.

Shenzhen Alex Technology Co., Ltd / ALOVA

Our Partners

Alex
Tech

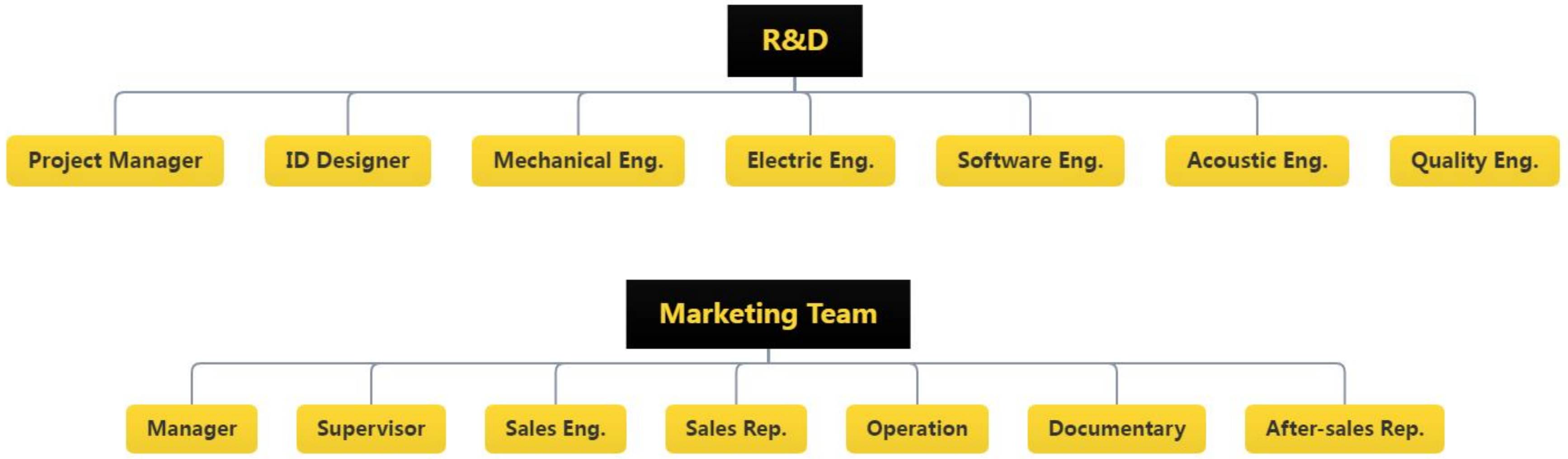


Roles and responsibilities

We treat every customer and every order with an innovative, professional and dedicated attitude. Quick-response sales service, professional engineering consultant team and quality control-oriented production links bring steady growth of orders to our customers.



Our Team

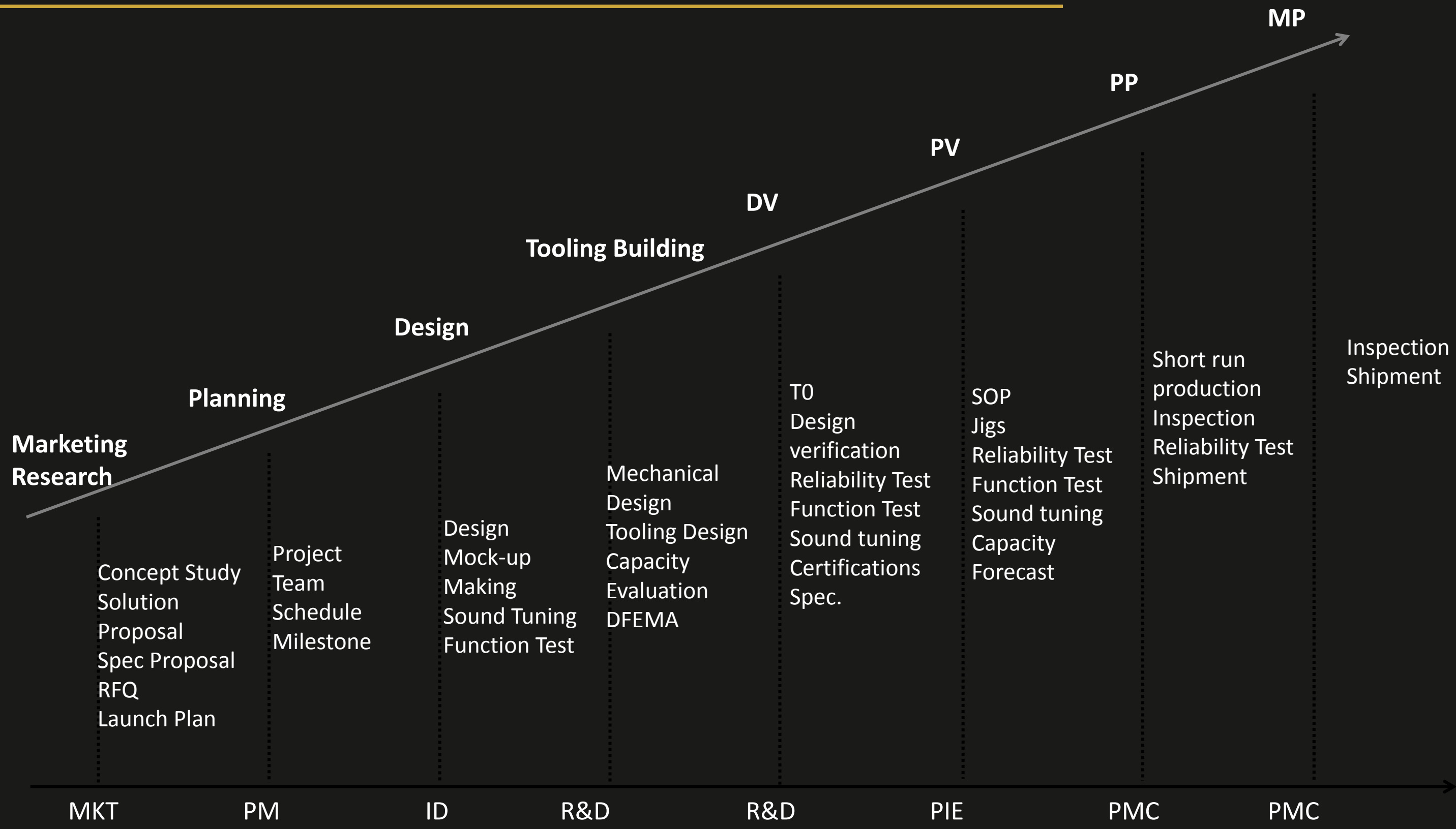




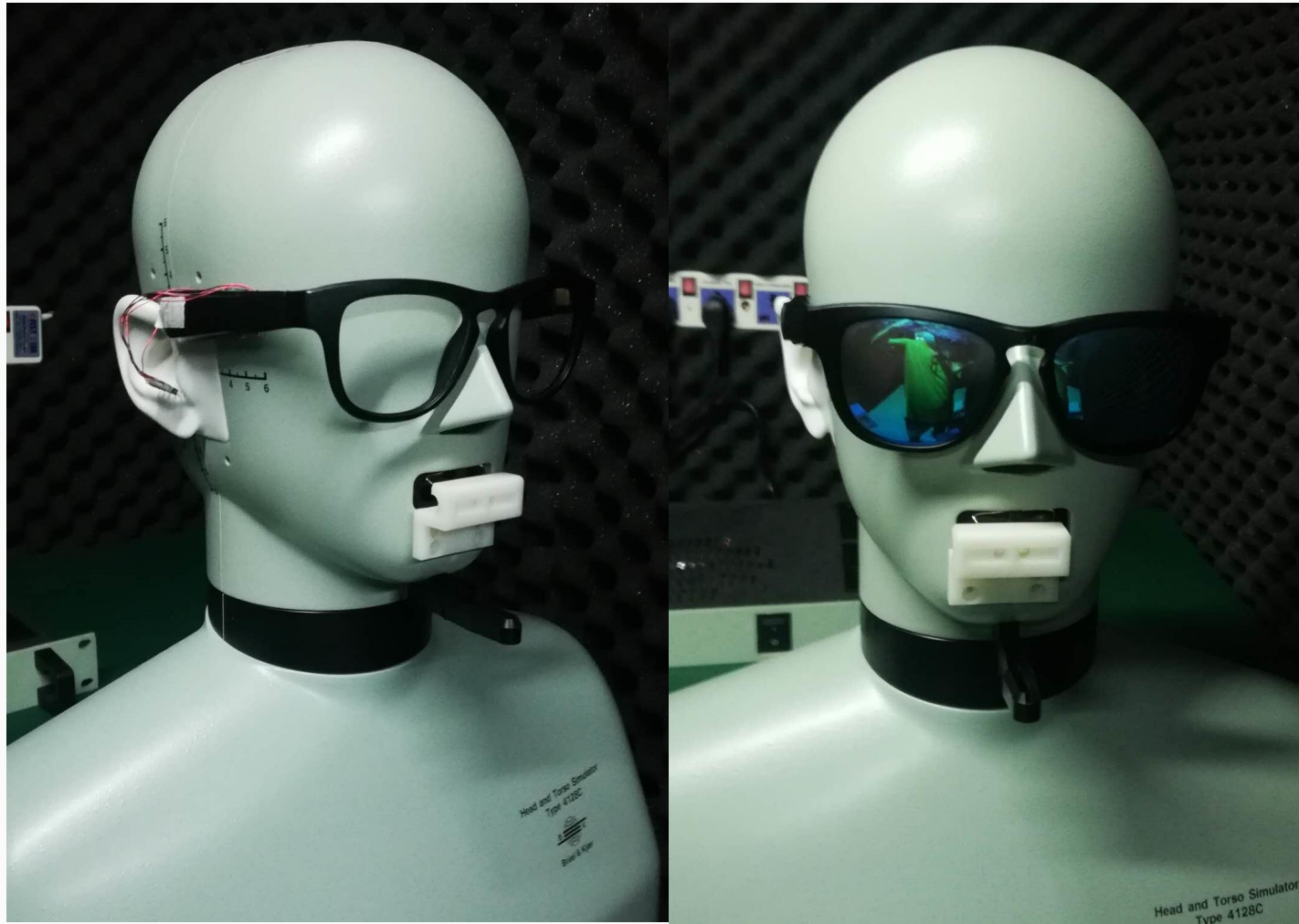
Design & Engineering Process



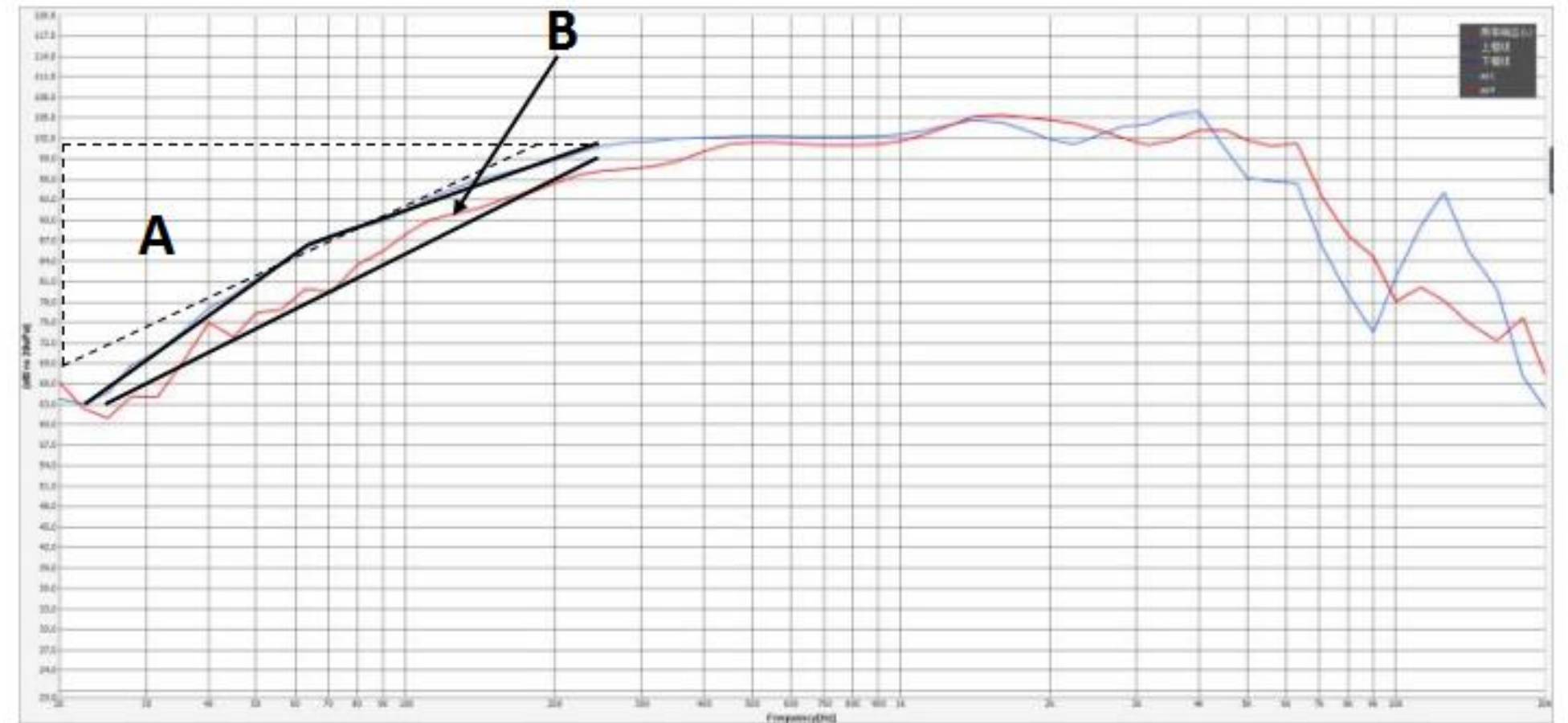
Shenzhen Alex Technology Co., Ltd / ALOVA



Design & Engineering Tools

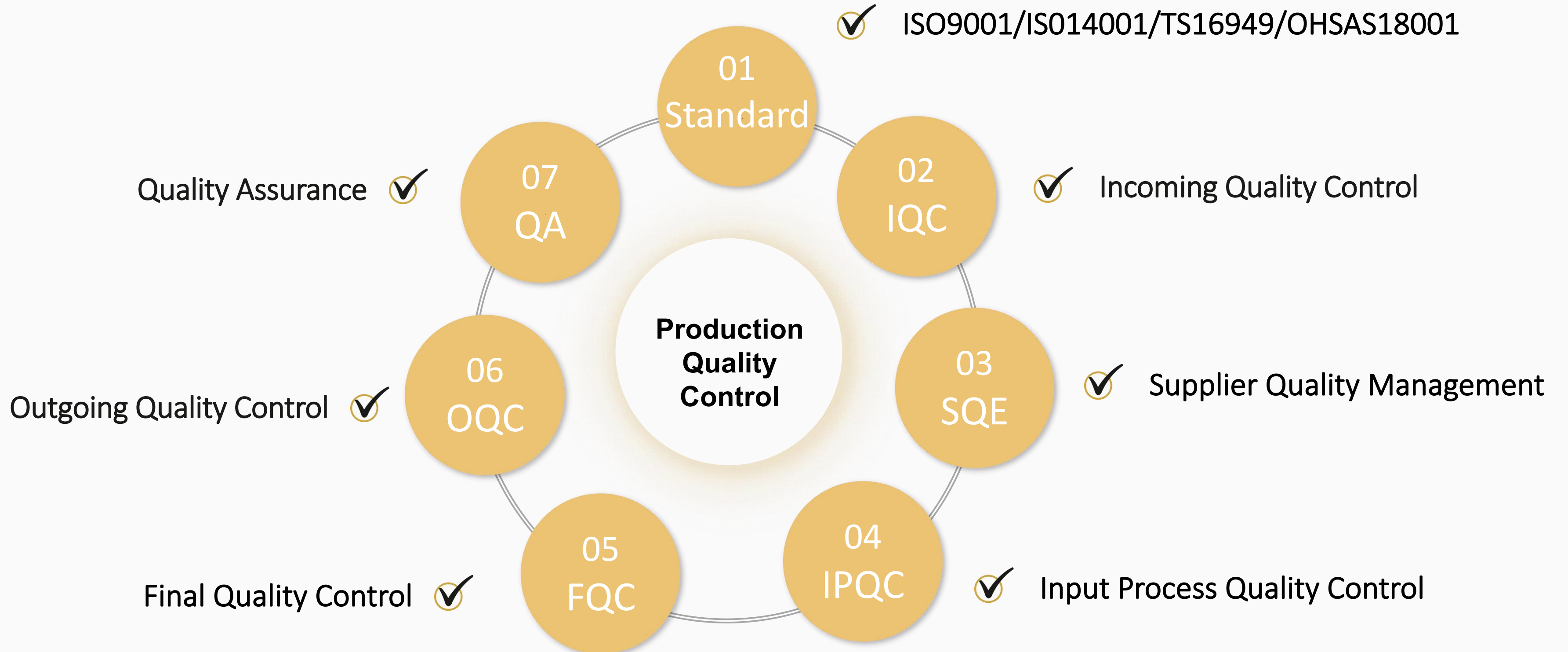


Soundcheck software
B&K Torso Simulator
4128-C



Our acoustic engineers use amplifier, DSP, Limiter and EQ to improve sound and get good acoustic performance of headphones.

Quality Control Process





Button Life Tester



Temperature Humidity Tester



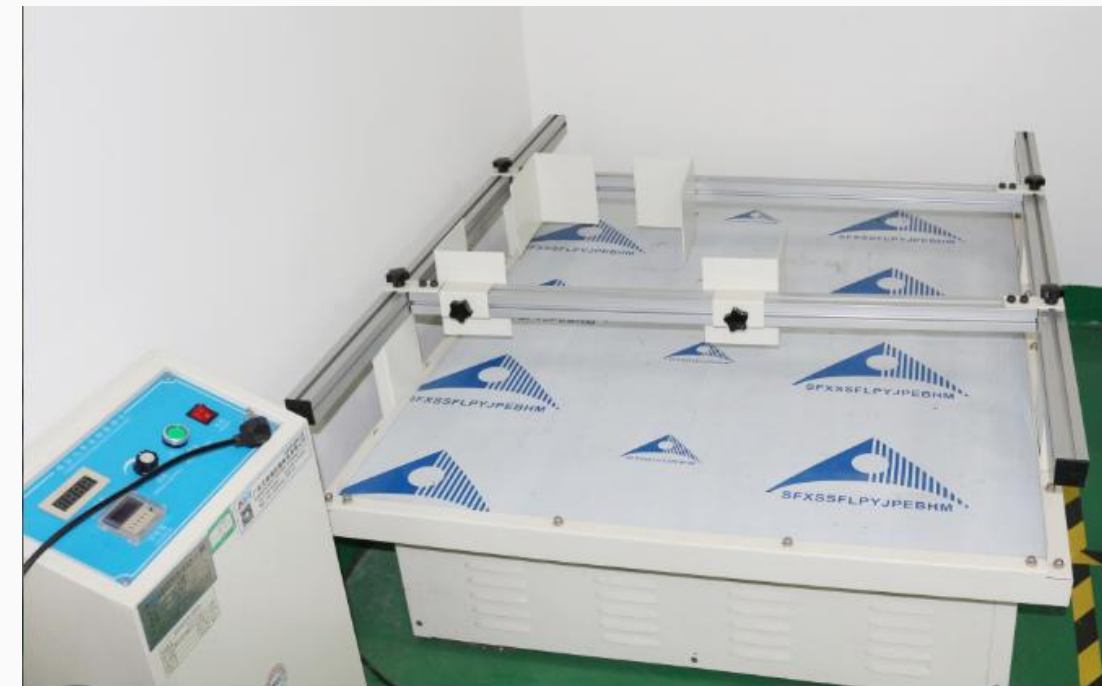
Battery Capacity Divider



Bluetooth Connection Tester



Salt Spray Tester



Transportation Vibration Tester

QC Equipments

Alex
Tech



Aging Shelves



Ultrasonic Machine



Pressure-preserving tools



Automatic packaging machine



Wire Swing Tester



Abrasion Tester

QC Equipments

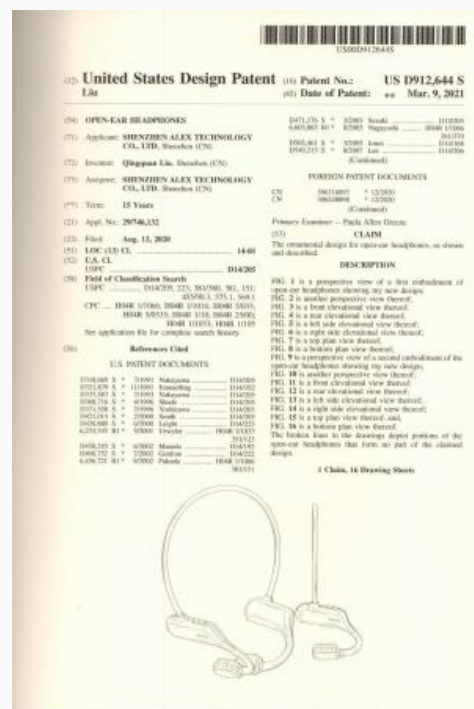
Make Sure All Within Standards

✓ All the products pass International Standard Certifications.



✓ All products are original designed & patented.

✓ Company & Factory All Verified.



Our Products

Directional Audio Headphones

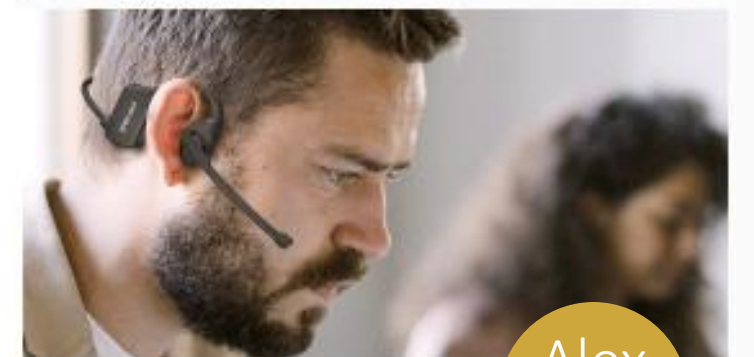
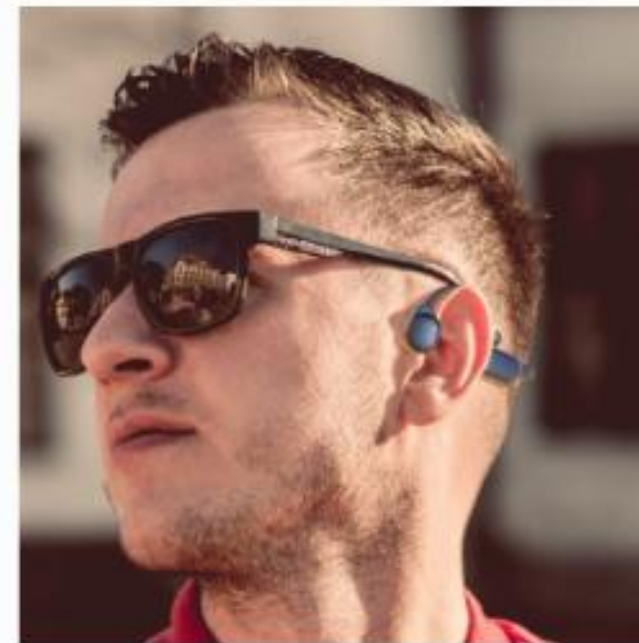
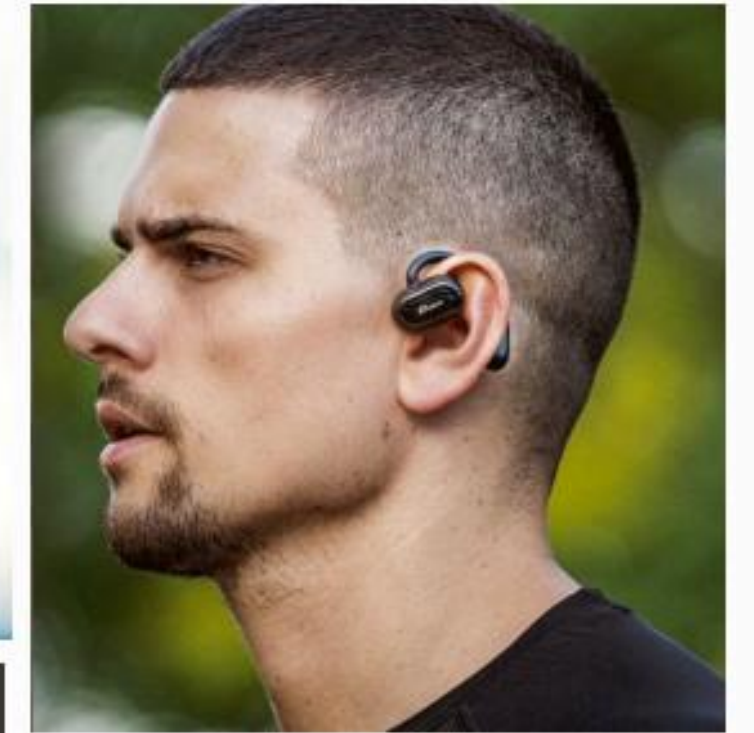
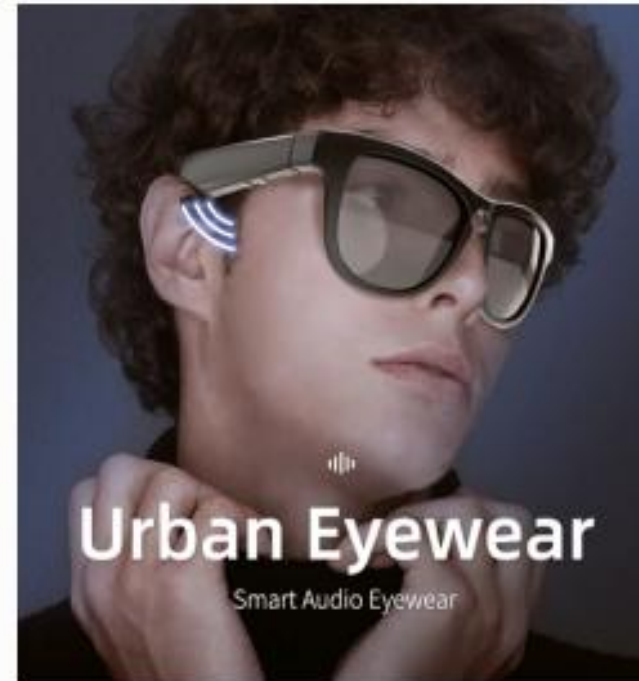
Directional audio headphones has unique internal structure design, spreading sound through air, combined with ecological diaphragm speakers creates a highly directional and high-quality sound experience.

Bone Conduction Headphones

Bone conduction headphones work by transducers vibrating against the bones in your cheek, which in turn sends those vibrations and passes the sound to the inner ear.

Open-Ear Eyewear & Others

We apply the concept of Open-Ear to various scenarios to design audio products that are more suitable for healthy life.





OPENEAR Unison



OPENEAR Duet



OPENEAR Air X1



OPENEAR Solo Life



OPENEAR Solo



OPENEAR Wave



OPENEAR Solo Pro



OPENEAR Bone X3



OPENEAR Bone X2



Helmet Headset



Smart Eyewear



Rhyme Band



Urban Eyewear

Our Products

Alex
Tech



Directional Audio Headphones Series

EN



Smart Eyewear

Directional Audio Eyewear

Features

- * Air Conduction Directional Audio
- * Open-Ear Safe & Healthy
- * TWS Headset X Glasses
- * Fashion Frame Slim Temple
- * Magnetic Charging
- * IP67 waterproof sweatproof
- * CE/ROHS/MSDS Certified

Specification

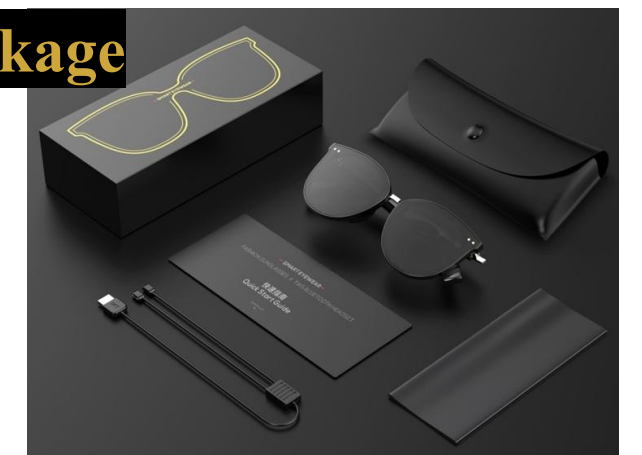
- * Bluetooth: JL 6936D v5.0
- * Connection Range: 10m
- * Each Frame Battery: 110mAh
- * Total Battery: 220mAh
- * Charging Time: 2 hours
- * Standby Time: 160 hours
- * Play Time: 5 hours

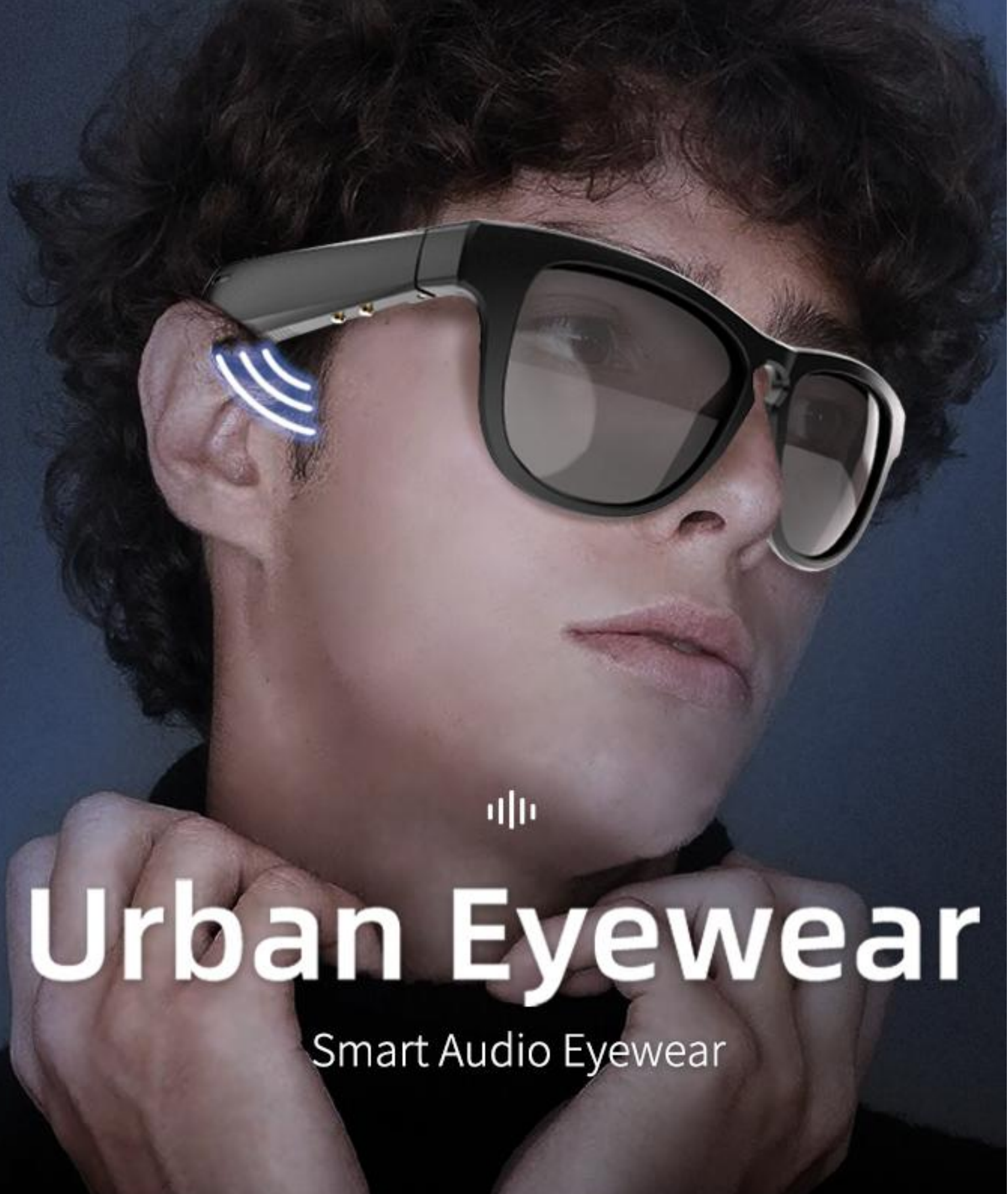


Functions

- * Music/Volume Control
- * Answer/Reject/Hang-up A Call
- * Access Voice Command

Package





Urban Eyewear

Smart Audio Eyewear

Urban Eyewear

Directional Audio Eyewear

Features

- * Air Conduction Directional Audio
- * Open-Ear Safe & Healthy
- * Situational Awareness Safe Outdoors
- * Dual EQ Mode (BASS/VOCAL)
- * Qualcomm APTX Premium Sound
- * Sunglasses / Anti-bluelight
- * Magnetic Charging

Specification

- * Bluetooth: QCC3034 V5.0
- * Connection Range: 10-15m
- * Battery: 180mAh
- * Charging Time: 1.5 hours
- * Standby Time: 120 hours
- * Music Play Time: 5 hours
- * Call Time: 6 hours



Functions

- * Music/Volume Control
- * Answer/Reject/Hang-up A Call
- * Access Voice Command

Package





Open-Ear design, keep situational awareness during outdoor workouts.

Rhyme Band

Directional Audio Headphones

Features

- * Air Conduction Directional Audio
- * Comfortable & Situational Awareness
- * True Wireless Connection
- * Unique Magnetic Charging Station
- * Moisture-wicking Material
- * Dual Mic for Clear Calls
- * Sweatproof & IPX5 Waterproof

Specification

- * Bluetooth: JieLi AD6973D V5.1
- * Connection Range: $\geq 10\text{m}$
- * Battery: 160 mAh
- * Charging Voltage: DC 5V/1A
- * Charging Time: 2 hours
- * Standby Time: ≥ 300 hours
- * Play Time: ≥ 5 hours

Functions

- * Music/Volume Control
- * Answer/Reject/Hang-up A Call
- * Access Voice Command

Package





IPX4

IPX4 Water Resistant For All-Weather Use

OPENEAR Unison Directional Audio Headphones

Features

- * Air Conduction Directional Audio
- * Open-Ear Comfort & Healthy
- * Situational Awareness Safe Outdoors
- * True Wireless Headphones
- * 24 Hours w/ Charging Case
- * Touch Control & IPX4 Water Resistant
- * CE/ROHS/MSDS Certified

Specification

- * Bluetooth: Actions 3015 V5.0
- * Earbud Battery: 130mAh
- * Play Time: 8 hours
- * Standby Time: 130 hours
- * Charging Time: 1.5 hours
- * Case Battery: 800mAh
- * Case Charge Earbuds: 2 times
- * Case Charging Time: 2 hours



Functions

- * Music/Volume Control
- * Answer/Reject/Hang-up A Call
- * Access Voice Command

Package





OPENEAR Air X3

Directional Audio Headphones

Features

- * Air Conduction Directional Audio
- * Open-Ear Comfort & Healthy
- * Situational Awareness Safe Outdoors
- * Clear Communication
- * Magnetic Charging
- * IPX5 Waterproof Sweatproof
- * CE/ROHS/MSDS Certified

Specification

- * Bluetooth: JieLi AD7006D V5.2
- * Connection Range: $\geq 10\text{m}$
- * Frequency Range: 20Hz-20KHz
- * Battery: 180 mAh
- * Charging Time: 2 hours
- * Standby Time: ≥ 300 hours
- * Play Time: ≥ 6 hours



Functions

- * Music/Volume Control
- * Answer/Reject/Hang-up A Call
- * Access Voice Command

Package





OPENEAR Air X1

Directional Audio Headphones

Features

- * Air Conduction Directional Audio
- * Open-Ear Comfort & Healthy
- * Situational Awareness Safe Outdoors
- * Deep Bass Sound
- * Magnetic Charging
- * IPX5 Waterproof Sweatproof
- * CE/ROHS/MSDS Certified

Specification

- * Bluetooth: JieLi AD7006D V5.2
- * Connection Range: $\geq 10\text{m}$
- * Frequency Range: 20Hz-20KHz
- * Battery: 180 mAh
- * Charging Time: 2 hours
- * Standby Time: ≥ 300 hours
- * Play Time: ≥ 6 hours



Functions

- * Music/Volume Control
- * Answer/Reject/Hang-up A Call
- * Access Voice Command

Package





OPENEAR Duet

Directional Audio Headphones

Features

- * Air Conduction Directional Audio
- * Open-Ear Comfort & Healthy
- * Situational Awareness Safe Outdoors
- * Super Lightweight only 16g
- * Small Size Design
- * IPX4 waterproof Sweatproof
- * CE/ROHS/FCC/MSDS Certified

Specification

- * Bluetooth: JL6963 V5.0
- * Connection Range: 10-15m
- * Frequency Range: 20Hz-20KHz
- * Battery: 120 mAh
- * Charging Time: 1.5 hours
- * Standby Time: 120 hours
- * Play Time: ≥ 5 hours

Functions

- * Play/Pause Music
- * Answer/Reject/Hang-up A Call

Package





OPENEAR Trio

Directional Audio Headphones

Features

- * Air Conduction Directional Audio
- * Open-Ear Comfort & Healthy
- * Situational Awareness Safe Outdoors
- * Super Lightweight only 16g
- * Small Size Design
- * IPX4 waterproof Sweatproof
- * CE/ROHS/FCC/MSDS Certified

Specification

- * Bluetooth: JL6963 V5.0
- * Connection Range: 10-15m
- * Frequency Range: 20Hz-20KHz
- * Battery: 120 mAh
- * Charging Time: 1.5 hours
- * Standby Time: 120 hours
- * Play Time: ≥5 hours



Functions

- * Play/Pause Music
- * Answer/Reject/Hang-up A Call

Package





03

OPENEAR Solo Life

Directional Audio Headphones

Features

- * Air Conduction Directional Audio
- * Open-Ear Comfort & Healthy
- * Situational Awareness Safe Outdoors
- * Rich Bass
- * IPX4 Waterproof Sweatproof
- * CE/ROHS/MSDS Certified

Specification

- * Bluetooth: BK3266 V5.0
- * Connection Range: 10-15m
- * Frequency Range: 20Hz-20KHz
- * Battery: 230 mAh
- * Charging Time: 2 hours
- * Standby Time: 360 hours
- * Play Time: ≥6 hours

Functions

- * Music/Volume Control
- * Answer/Reject/Hang-up A Call
- * Access Voice Command

Package



Listen to the music and
be aware of surroundings.

OPENEAR Duet Plus

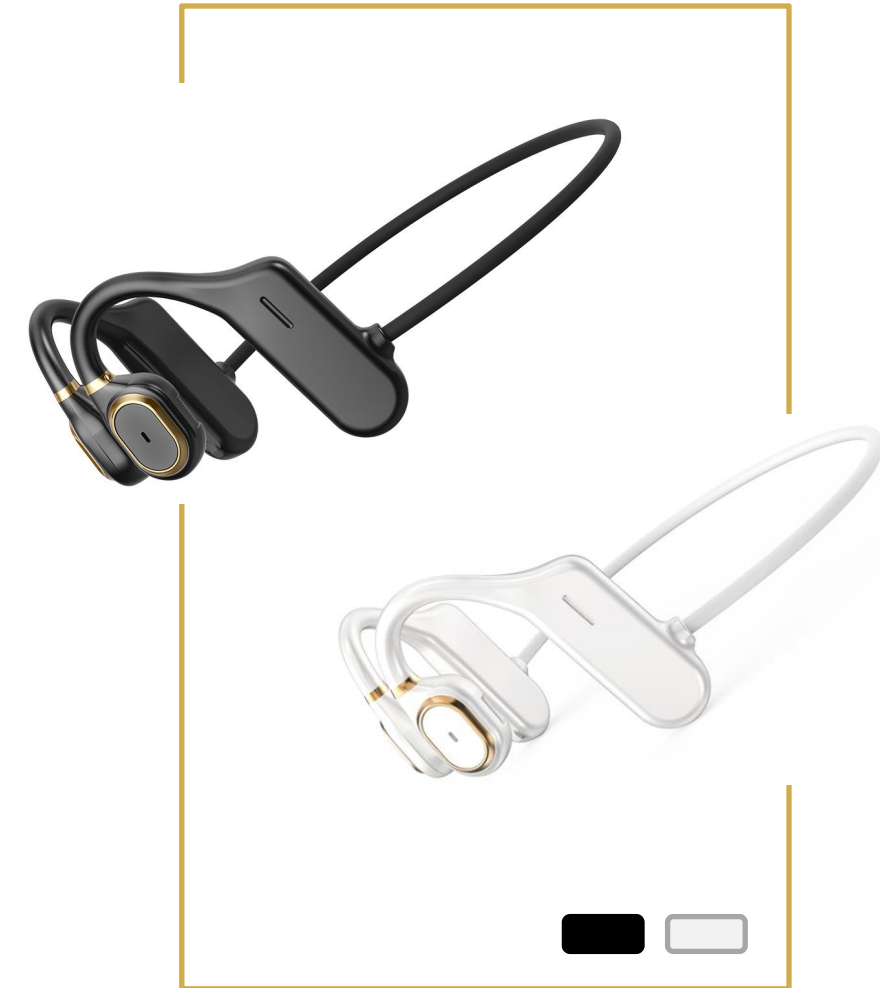
Directional Audio Headphones

Features

- * Air Conduction Directional Audio
- * Open-Ear Comfort & Healthy
- * Situational Awareness Safe Outdoors
- * Super Lightweight Only 18g
- * Qualcomm APTX Premium Sound
- * IPX4 waterproof Sweatproof
- * CE/ROHS/FCC/MSDS Certified

Specification

- * Bluetooth: QCC3034 V5.1
- * Connection Distance: $\geq 10M$
- * Battery Capacity: 160mAh
- * Play Time: $\approx 5h$ (80% volume)
- * Standby Time: 160 hours
- * Charging Time: ≈ 1.5 hours



Functions

- * Play/Pause Music
- * Answer/Reject/Hang-up A Call
- * Access Voice Assistant

Package





OPENEAR Quintet

Directional Audio Headphones

Features

- * Air Conduction Directional Audio
- * Open-Ear Safe & Healthy
- * Situational Awareness Safe Outdoors
- * MP3/BT Dual Mode
- * Support TF Card Up to 128GB
- * IPX4 waterproof Sweatproof
- * CE/ROHS/FCC/MSDS Certified

Specification

- * Bluetooth: BK3266 5.0 EDR
- * Connection Distance: 10m
- * Battery Capacity: 180mAh
- * Play Time: ≥5 hours
- * Standby Time: 200 hours
- * Charging Voltage: DC 5V
- * Charging Time: 1.5 hours



Functions

- * Music/Volume Control
- * Answer/Reject/Hang-up A Call
- * Access Voice Command

Package





OPENEAR Quartet

Directional Audio Headphones

Features

- * Air Conduction Directional Audio
- * Open-Ear Safe & Healthy
- * Situational Awareness Safe Outdoors
- * Deep Bass Sound
- * Economic Cost-effective
- * IPX4 waterproof Sweatproof
- * CE/ROHS/FCC/MSDS Certified

Specification

- * Bluetooth: Jieli 6936 V5.0
- * Connection Range: 10-15m
- * Frequency Range: 20Hz-20KHz
- * Battery: 200 mAh
- * Charging Time: 1.5 hours
- * Standby Time: 200 hours
- * Play Time: ≥7 hours

Functions

- * Play/Pause Music
- * Answer/Reject/Hang-up A Call
- * Access Voice Command

Package





Bone Conduction Headphones Series

EN



OPENEAR Bone X2

IP68 Bone Conduction Headphones

Features

- * Bone Conduction Technology
- * Designed For Swimming
- * IP68 Fully Waterproof
- * Bluetooth + 8GB Storage
- * Bass Clear Sound
- * Ergonomic Wrap-around
- * Magnetic Charging

Specification

- * Bluetooth: JieLi AD7006D V5.2
- * Connection Distance: 10m
- * MP3 Storage: 8GB
- * Music Format: mp3, wav
- * Battery Capacity: 180mAh
- * Play Time: ≥ 6 hours
- * Standby Time: ≥ 300 hours
- * Charging Time: 2 hours



Functions

- * Music/Volume Control
- * Answer/Reject/Hang-up A Call
- * Access Voice Command

Package





OPENEAR Bone X1

Bone Conduction Headphones

Features

- * Bone Conduction Technology
- * Open-Ear Comfort & Healthy
- * Situational Awareness Safe Outdoors
- * Deep Bass Sound & Magnetic Charging
- * IPX5 Waterproof Sweatproof
- * CE/ROHS/MSDS Certified

Specification

- * Bluetooth: JieLi AD7006D V5.2
- * Connection Range: $\geq 10\text{m}$
- * Frequency Range: 20Hz-20KHz
- * Battery: 180 mAh
- * Charging Time: 2 hours
- * Standby Time: ≥ 300 hours
- * Play Time: ≥ 6 hours



Functions

- * Music/Volume Control
- * Answer/Reject/Hang-up A Call
- * Access Voice Command

Package





OPENEAR Wave

IP68 Bone Conduction Headphones

Features

- * Bone Conduction Technology
- * Designed For Swimming
- * IP68 Fully Waterproof
- * Bluetooth + 16GB Storage
- * Deep Bass Sound
- * Ergonomic Wrap-around
- * Magnetic Charging

Specification

- * Bluetooth: JL6956F V5.1
- * Connection Distance: 10m
- * MP3 Storage: 16GB
- * Music Format: mp3, wav
- * Battery Capacity: 160mAh
- * Play Time: ≥ 5 hours
- * Standby Time: ≥ 300 hours
- * Charging Time: 1.5 hours



Functions

- * Music/Volume Control
- * Answer/Reject/Hang-up A Call
- * Access Voice Command

Package



OPENEAR Solo Pro

Bone Conduction Headphones

Features

- * Bone Conduction Technology
- * Open-Ear Comfort & Healthy
- * Situational Awareness Safe Outdoors
- * Multi-colors Options
- * Type-C Charging
- * IPX6 Waterproof Sweatproof
- * CE/ROHS/MSDS Certified

Specification

- * Bluetooth: BK3266 5.0
- * Connection Range: 10-15m
- * Frequency Range: 20Hz-20KHz
- * Battery: 230 mAh
- * Charging Time: 2 hours
- * Standby Time: 220 hours
- * Play Time: ≥6 hours

Functions

- * Music/Volume Control
- * Answer/Reject/Hang-up A Call
- * Access Voice Command

Package





Helmet Headset

Bone Conduction Headphones

Features

- * Bone Conduction Technology
- * Designed for Full-face Helmet
Up to 70km/h Ride
- * Wireless Phone Call
- * Access Voice Assistant
- * IPX6 Waterproof
- * CE/ROHS Certified

Specification

- * Bluetooth: QCC3003 V5.0
- * Connection Range: 10-15m
- * Frequency Range: 20Hz-20KHz
- * Battery: 400 mAh
- * Charging Time: 2 hours
- * Standby Time: 280 hours
- * Play Time: ≥8 hours



Functions

- * Music/Volume Control
- * Answer/Reject/Hang-up A Call
- * Access Voice Command

Pack





Any questions?

We're always here for you.

Karen@alex-technology.com / +86 135 3416 6345



scan my wechat

